



FarmLab

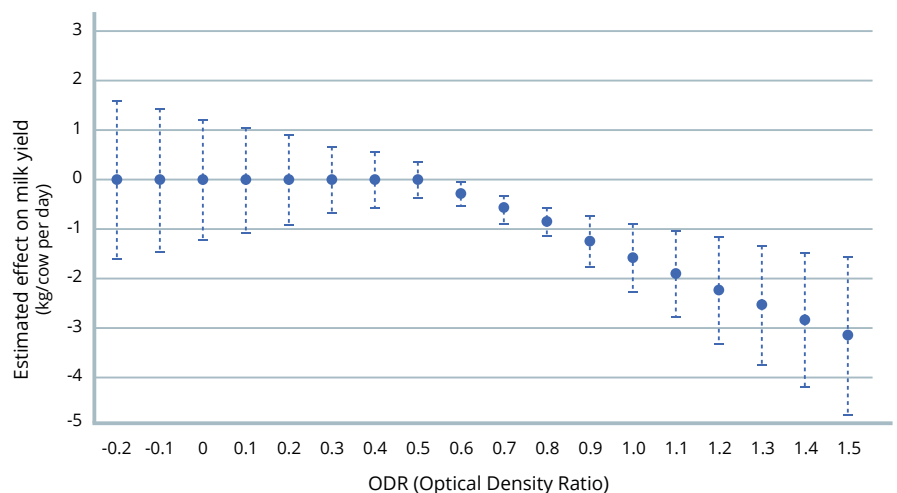
DIAGNOSTICS

GUIDE TO INTERPRETATION OF OSTERTAGIA BULK TANK MILK SAMPLES

- ODR <0.4** Negative result
- ODR 0.4-0.8** Suggesting moderate-low level of parasite burden with possible adverse effect on milk yield.
- ODR >0.8** Suggesting significant parasite burden with likely adverse effect on milk yield.

The drop in milk yield associated with various antibody levels is shown in the chart below.

Interpretation of bulk tank milk samples



FarmLab Diagnostics accept no responsibility for interpretation of results. Please consult your veterinary surgeon/animal health advisor for advice on all aspects of a parasite control programme.



FarmLab

Gateway to Animal Health

DIAGNOSTICS

- Farmlab Diagnostics, Emlagh Lodge, Elphin, Co. Roscommon.
- 071 9630792
- 071 9630787
- info@farmlab.ie
- www.farmlab.ie

